



## 2. DESCRIPTION

There are several specific warning labels on this machine please become familiarized with all warning labels. Replace any safety label that is damaged, or missing.

### 1) MAST WARNING (Item 6)

This warning label is positioned on the side of the mast.

- ⚠ **Never stand or work under the raised forks even if the hydraulic safety lock lever is applied.**
- ⚠ **In case of working under the forks, it is essential to support the carriage with blocks.**



25B9UOM002

### 2) TEMPERATURE (Item 16)

This warning labels are positioned next to the side cover end point.

- ⚠ **Coolant must be checked as specified in the maintenance chart.**



25B9UOM003

### 3) HAND CAUTION (Item 8)

This warning label is positioned on the top side of mast.

- ⚠ **It warns of the danger of injury from movement between rails, chains, sheaves, fork carriage, and other parts of the mast assembly. Do not climb on or reach into the mast. Personal injury will result if any part of your body is put between moving parts of the mast.**

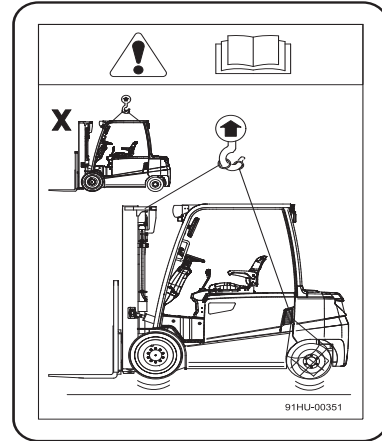


25B9UOM004

#### 4) HANGER (Item 5)

- (1) This warning label is positioned on the left side of counterweight.

▲ Refer to page 1-21 for safe loading procedures.



25B9UOM005

#### 5) BRAKE FLUID WET (Item 17)

This warning label is located on the left side of dashboard.



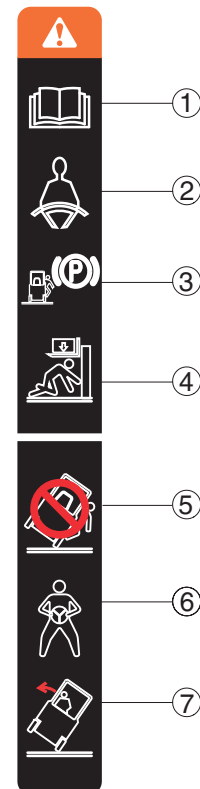
25B9UOM006

#### 6) OVER HEAD GUARD WARNING (Item 4)

This warning label is positioned on the front inside of overhead guard stay-RH.

- ① Refer to operator's manual in detail.
- ② Always buckle up the seat belt for safety operation.
- ③ When the operator get off the machine, always pull the parking brake lever so that the machine can keep with stopping condition.
- ④ The people should not pass through under forks and other attachments which are lifted or being lifted.
- ⑤ Do not jump down from the machine. It can be caused that the operator have severe injury or death in the event of a tip over.
- ⑥ Outstretch the legs as widely as possible and grasp firmly the steering handle.
- ⑦ Learn the body to the opposite direction in order to avoid severe injury or death when the machine is tipped over.

※ Refer to page 3-3 for details.



25B9UOM007

## 7) PARKING BRAKE (Item 29)

This warning plate is located on the right side of the parking brake lever.

### ※ Before leaving the operator's seat :

- Be sure to lower the work attachment to the ground.
- Apply the parking brake.



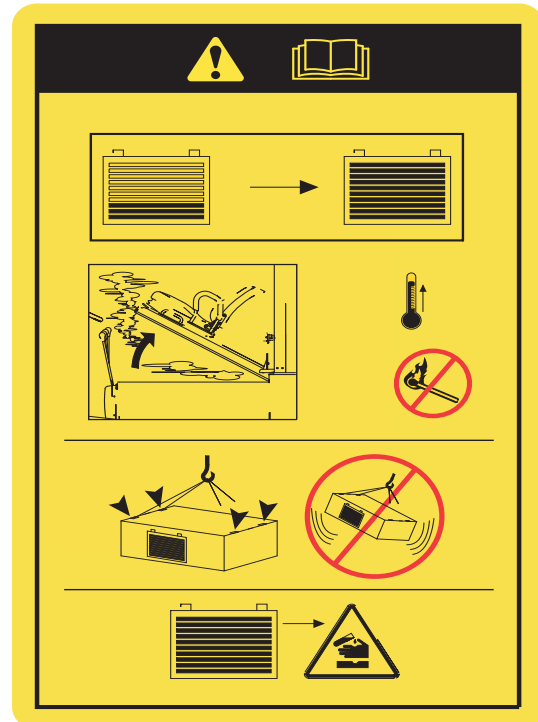
25B9U0M008

## 8) BATTERY HANDLING (Item 13)

This battery handling is located on the R/H side cover inside.

### ▲ Refer to page 7-21 for a safe battery removal.

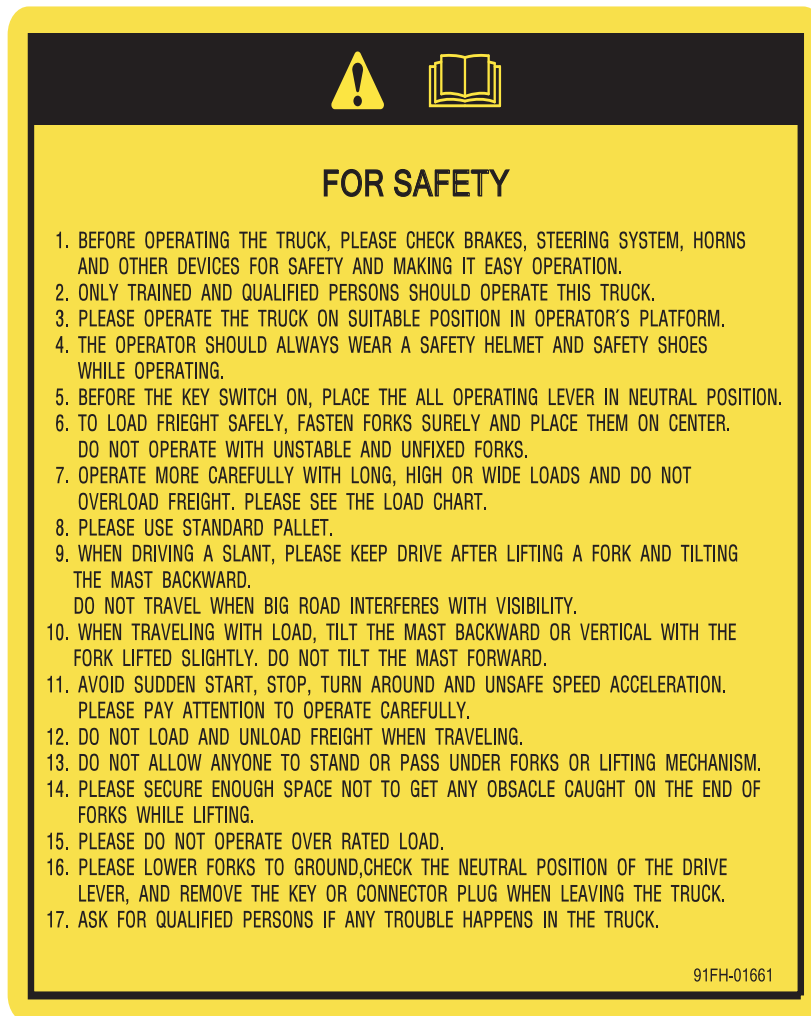
- ※ Open the battery cover when charging. Battery being charged not only heat, but also inflammable hydrogen gas is produced. Keep fire away.
- ※ Hoisting the battery case, use 2 or 4 wires with hook and handle carefully, not to shock.
- ※ The electrolyte solution of battery is dilute sulfuric acid ( $H_2SO_4$ ). Be careful not to drop on clothes and mechanical parts.



25B9U0M009

## 9) SAFETY WARNING (Item 14)

This warning safety is located on the dashboard cover.



25B9UOM010